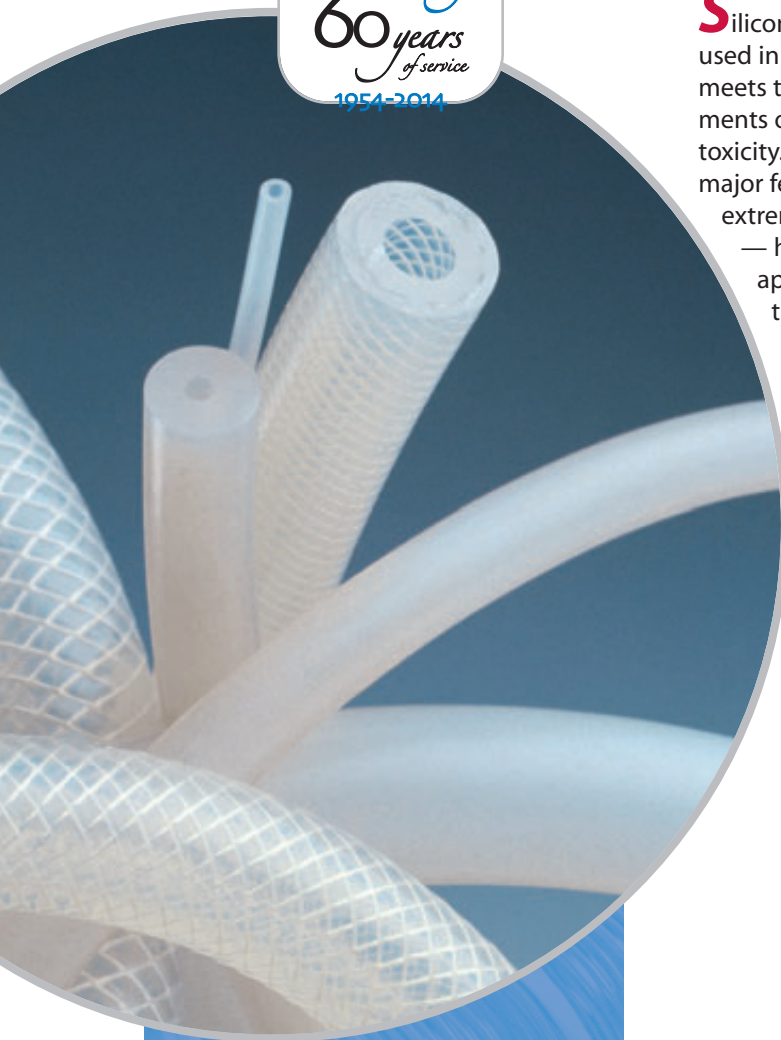


Celebrating
60 years
of service
 1954-2014



Silicone tubing has long been used in the medical field, as it meets that industry's requirements of cleanliness and non-toxicity. Another of silicone's major features — resistance to extreme temperature variations — has enabled its use in applications where a flexible tubing is needed to handle temperatures not possible with other plastics or rubbers.

Being a rubber-like thermoset material, silicone tubing and hose is extremely pliable and elastic, and it is not altered by the effects of weather. It generally exhibits

inertness toward U.V., radiation, and ozone making it an excellent choice for electrically-associated applications.

NewAge® Industries offers a broad line of tubing and hose products made from this versatile material, including platinum cured products to ensure the least possible extractables. Our manufacturing clean room is designed to produce products particularly suited to medical and pharmaceutical applications, and our industrial grades offer exceptional performance at relatively lower costs.

Note: NewAge Industries does not produce or sell human-implantable silicone products. ■

Silcon®	
Silicone tubing	2
Silcon Medical	
Medical grade silicone tubing ...	3
Silcon Med-X	
Platinum cured medical grade silicone tubing	4
Silbrade®	
Braid reinforced silicone hose ...	5
Silbrade Medical	
Medical grade braid reinforced silicone hose	6
Silbrade Platinum	
Platinum cured braid reinforced silicone hose	7

Applications

- Aerospace* ■ Appliances ■ Automotive ■ Beverage & Dairy Service ■ Blood & Biological Fluid Handling ■ Cell Culturing ■ Chemical Transfer
- Clean Rooms ■ Computers ■ Deionized Water Transfer ■ Dialysis ■ Duplicating Equipment ■ Fermenter Lines ■ Food Handling ■ Gaskets, Seals, & 'O'-Rings ■ Hot Fill & Vacuum Systems ■ Insulation Sleeving ■ I.V. Administration ■ Laboratory ■ Liquid Resin Feeds ■ Medical & Dental Equipment ■ Peristaltic Pumps ■ Personal Care Products ■ Pharmaceutical Processing ■ Protective Jacketing ■ Sterile Bottle Filling ■ Stirring Vessels
- Surgical Drains ■ Thermal Protection ■ Vaccine Transfer ■ More

*See Terms and Conditions Agreement for Limitations



Silicone Tubing



- Raw materials meet FDA requirements per FDA 21 CFR 177.2600 for use with food contact surfaces
- Able to resist extreme temperature variation: -100°F to 500°F (350°F maximum for NSF applications)
- Translucent natural color for visual contact with the flow
- Resilient, stretchable, and resistant to compression set
- Reusable — will withstand repeated sterilization[^]
- Odorless, tasteless, and inert
- Good electrical and weatherability properties — resists U.V., ozone, gases, and moisture
- Listed by the National Sanitation Foundation (NSF-51) for food equipment materials[‡]
- Free of BPA, latex and phthalates; REACH and RoHS compliant



Notes

The most outstanding properties of SILCON are its flexibility and resistance to temperature extremes. These, plus its good electrical properties and ability to self-extinguish, make SILCON an excellent choice for appliances and computers.

Peroxide-cured SILCON contains no sulphur or other acid-producing chemicals, thereby eliminating the possibility of staining, corroding, or deteriorating materials it contacts. It is extremely resistant to ozone and U.V. over long time periods.

Care is recommended in the selection of fittings and clamps for SILCON as sharp barbed fittings or unlined metal clamps could tear into the tubing wall and possibly cause a failure.

[^]SILCON may be low pressure steam sterilized in-line or autoclaved at up to 250°F in a normal autoclaving cycle. However, if exposed to repeated steam sterilization or long-term high temperature or pressure, silicone will eventually relax and become gummy. It should then be replaced.

Colors for industrial applications are available through minimum order — call for details.

SILCON is not recommended for implantable or in-body uses or for continuous steam applications.

Physical Properties**

Hardness, Shore A ±5	50
Tensile Strength, psi	1444
Elongation at Break, %	608
Tear Resistance, Die B, ppi	125
Modulus at 100%, psi	186
Brittle Temperature, °F	-100
Max. Operating Temperature, °F	500
Max. Operating Temperature for NSF, °F	350

**Values listed are typical for the material used in manufacture, except where noted, and are meant only as a guide to aid in design. Field testing should be performed to find the actual values for your application.

Recommended Fittings & Clamps

- Thermobarb® barbed fittings (see page 4)
- Oetiker® ear type clamps
- Kwik Clamp™ nylon double bond hose clamps
- Worm gear clamps

PART NO.	ID (IN.)	OD (IN.)	STANDARD LENGTH (FT.)	WORKING PSI AT 70°F*	LBS. PER 100 FT.
280 0084	1/16	1/8	100	10	0.50
280 0161	1/16	3/16	100	20	1.34
280 0315	3/32	5/32	100	10	0.66
280 0392	3/32	7/32	100	15	1.58
280 0469	1/8	3/16	100	10	0.88
280 0546	1/8	1/4	100	20	2.00
280 0623	1/8	5/16	100	25	3.32
280 0700	1/8	3/8	100	28	4.92
280 0854	5/32	9/32	100	20	2.14
280 0931	5/32	11/32	100	20	3.64
280 1008	3/16	1/4	100	5	1.22
280 1085	3/16	5/16	100	20	2.64
280 1162	3/16	3/8	100	20	4.12
280 1239	3/16	7/16	100	15	6.14
280 1393	1/4	5/16	100	10	1.50
280 1470	1/4	3/8	100	5	3.34
280 1547	1/4	7/16	100	20	5.12
280 1624	1/4	1/2	100	15	7.50
280 1778	5/16	7/16	100	10	3.66
280 1855	5/16	1/2	100	10	6.30
280 1932	3/8	1/2	100	10	4.32
280 2009	3/8	9/16	100	10	7.14
280 2086	3/8	5/8	100	10	10.16
280 2163	3/8	3/4	100	15	16.72
280 2240	7/16	5/8	100	10	7.70
280 2317	1/2	5/8	100	5	5.84
280 2394	1/2	11/16	100	5	9.50
280 2471	1/2	3/4	100	10	13.12
280 2548	1/2	7/8	100	10	15.00
280 2625	5/8	3/4	100	5	6.86
280 2702	5/8	13/16	100	5	11.34
280 2779	5/8	7/8	100	5	13.38
280 2856	5/8	1	100	10	22.86
280 3087	3/4	1	50	5	17.64
280 3164	3/4	1-1/8	50	10	26.56

Add length suffix to part number when ordering. Example: 100 ft. of 1/16" I.D. x 1/8" O.D. tubing is part number 280 0084-100.

Working pressures are calculated from burst testing using a 3:1 safety factor. Application testing is recommended.

BOLD indicates the critical dimension for fittings application.



Custom Services

- Cut ■ Size ■ Color ■ Hardness ■ And More

Call for more information: 800-506-3924 or 215-526-2300

Medical Grade Silicone Tubing

- Finished product meets USP Class VI requirements
- Manufactured under good manufacturing procedures in a controlled environment
- Able to resist extreme temperature variation: -100°F to 400°F
- Reusable — will withstand repeated sterilization[^]
- Translucent natural color for visual contact with the flow
- Odorless, tasteless, and inert
- Raw materials meet FDA requirements per FDA 21 CFR 177.2600 for use with food contact surfaces
- May be used on peristaltic pumps
- Free of BPA, latex and phthalates; REACH and RoHS compliant



Made in U.S.A.



PART NO.	SUGGESTED SIZES FOR PUMPS ^{††}	ID (IN.)	OD (IN.)	WALL (IN.)	STANDARD LENGTH (FT.)
281 0304		.030	.065	.018	50
281 0381		1/32	5/32	1/16	50
281 0458	•	.040	.085	.023	50
281 0689		1/16	1/8	1/32	50
281 0766		1/16	3/16	1/16	50
281 0843	•	5/64	1/8	.024	50
281 0920		.104	.192	.044	50
281 0997		1/8	1/4	1/16	50
281 1151		3/16	5/16	1/16	50
281 1228	•	3/16	3/8	3/32	50
281 1305	•	1/4	3/8	1/16	50
281 1382	•	1/4	7/16	3/32	25
281 1459	•	1/4	1/2	1/8	25
281 1536		5/16	7/16	1/16	25
281 1613	•	5/16	1/2	3/32	25
281 1844	•	3/8	5/8	1/8	25
281 1921*		1/2	5/8	1/16	25

*Limited stock availability; lead times and minimums may apply — call for details. Sold by standard coil length only. Add length suffix to part number when ordering. Example: 50 ft. of .030" I.D. x .065" O.D. tubing is part number 281 0304-50.

††Most common peristaltic pump sizes based on I.D. and wall requirements. **BOLD** indicates the critical dimension for fittings application.



Notes

SILCON MEDICAL tubing is made under good manufacturing procedures and conforms to the biocompatibility requirements of USP Class VI. SILCON MEDICAL's surface properties resist sticking and encrustation, and will not support bacteria growth. The tubing is soft, pliable, and contains no plasticizers which could leach out, causing flow contamination or tube hardening.

Care is recommended in the selection and application of fittings and clamps as sharp barbed fittings or unlined metal clamps could tear into the tubing wall.

[^]If exposed to repeated steam sterilization or long-term high temperature or pressure, silicone will eventually relax and become gummy. It should then be replaced.

Peroxide-cured SILCON MEDICAL tubing is supplied in individual, non-sterile, heat-sealed polybags and should be sterilized prior to use.

SILCON MEDICAL is not recommended for implantable or in-body uses or for continuous steam applications.

Physical Properties**

Hardness, Shore A ±5	60
Tensile Strength, psi	1305
Elongation at Break, %	429
Tear Resistance, Die B, ppi	177
Modulus at 100%, psi	230
Brittle Temperature, °F	-100
Maximum Operating Temperature, °F	400

**Values listed are typical for the material used in manufacture, except where noted, and are meant only as a guide to aid in design. Field testing should be performed to find the actual values for your application.

Recommended Fittings & Clamps

- Thermobarb[®] barbed fittings (see page 4)
- Oetiker[®] ear type clamps
- Kwik Clamp[™] nylon double bond hose clamps
- Worm gear clamps

Custom Services

- Size
- Hardness
- Color
- And More

Call for more information
800-506-3924

Meet Some of NewAge Industries' Owners

Through an Employee Stock Ownership Plan (ESOP), we're part owners in the company, and that makes *your* satisfaction an investment in *our* future.



John-Paul Deitz
Project Eng./Mold Designer/Owner
3 years



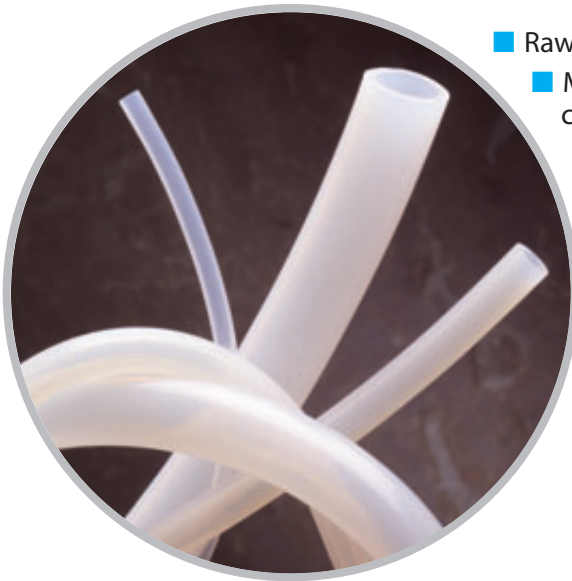
Seden Ken
Silicone Molding/Owner
4 years



Joel DeVine
Quality Control Supervisor/Owner
12 years

ESOP Employee Owned
for Your Benefit

Platinum Cured Medical Grade Silicone Tubing



- Raw materials meet USP Class VI requirements
- Manufactured under good manufacturing procedures in a controlled environment
- Platinum cured for the highest degree of purity (least extractables)
- Reusable — will withstand repeated sterilization[^]
- Translucent natural color for visual contact with the flow
- Applications include pharmaceutical, biomedical, health and beauty, food, and beverage handling
- Free of BPA, latex and phthalates; REACH and RoHS compliant



PART NO.	ID (IN.)	OD (IN.)	WALL (IN.)
284 0404	.030	.160	.065
284 0677	1/16	1/8	1/32
284 0684	1/16	3/16	1/16
284 0978	1/8	1/4	1/16
284 0985	1/8	5/16	3/32
284 1174	3/16	5/16	1/16
284 1181	3/16	3/8	3/32
284 1272	1/4	3/8	1/16
284 1279	1/4	7/16	3/32
284 1286	1/4	1/2	1/8
284 1370	5/16	7/16	1/16
284 1377	5/16	1/2	3/32
284 1468	3/8	1/2	1/16
284 1475	3/8	9/16	3/32
284 1482	3/8	5/8	1/8
284 1580	1/2	3/4	1/8
284 1678	5/8	7/8	1/8

Notes

SILCON MED-X tubing is made under good manufacturing procedures and conforms to the biocompatibility requirements of USP Class VI.

SILCON MED-X's surface properties resist sticking and encrustation and will not support bacteria growth. The tubing is soft, pliable, and contains no plasticizers which could leach out, causing flow contamination or tube hardening.

Other sizes and 60A durometer material are also available — call for details.

Care is recommended in the selection and application of fittings and clamps as sharp barbed fittings or unlined metal clamps could tear into the wall.

[^]If exposed to repeated steam sterilization or long-term high temperature or pressure, silicone will eventually relax and become gummy. It should then be replaced.

SILCON MED-X is supplied in individual, heat-sealed polybags and should be sterilized prior to use.

SILCON MED-X is not recommended for implantable or in-body uses or for continuous steam applications.

Physical Properties**

Hardness, Shore A ±5	50
Tensile Strength, psi	1348
Elongation at Break, %	900
Tear Resistance, Die B, ppi	250
Modulus at 100%, psi	190
Brittle Temperature, °F	-100
Maximum Operating Temperature, °F	400

**Values listed are typical for the material used in manufacture, except where noted, and are meant only as a guide to aid in design. Field testing should be performed to find the actual values for your application.

Sold by standard coil length (50 ft); additional lengths may be available — call for details. Add length suffix to part number when ordering. Example: 50 ft. of .030" I.D. x .160" O.D. tubing is part number 284 0404-50.

BOLD indicates the critical dimension for fittings application.



Recommended Fittings & Clamps

- Thermobarb® barbed fittings (see below)
- Oetiker® ear type clamps
- Kwik Clamp™ nylon double bond hose clamps
- Worm gear clamps

Custom Services

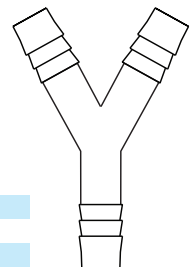
- **Size**
- **Hardness**
- **Color**
- **And More**

Call for more information
800-506-3924

FDA-APPROVED POLYPROPYLENE Y FITTINGS

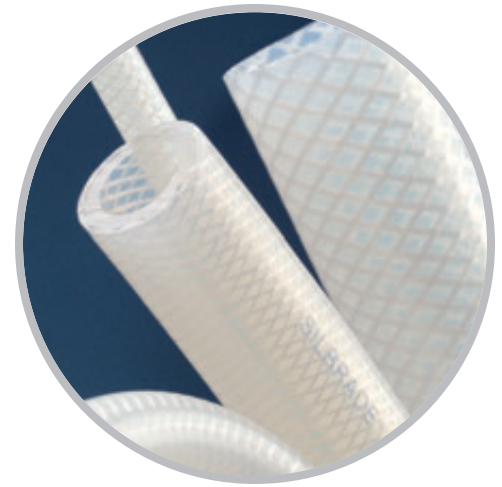
- Precision molded of FDA-approved polypropylene copolymer
- Meets USP Class VI standards and compliant with FDA 21 CFR 177.1520
- Longer, more tapered lead barb slides easily into tubing and provides a secure attachment and reduced leakage
- Sterilizable by autoclave or gamma radiation
- Free of animal-derived ingredients
- No mold parting lines or flashing
- RoHS compliant
- Less costly—ideal for single-use/disposable tubing assemblies
- Many other barbed fittings are available—see the Barbed Fittings catalog

PART NO.	SIZE (IN.)
502 7106	1/4
502 7120	3/8
502 7148	1/2



Braid Reinforced Silicone Hose

- Open mesh polyester braiding incorporated within the walls of silicone tubing
- Raw materials meet FDA requirements per FDA 21 CFR 177.2600 for use with food contact surfaces
- Reusable — will withstand repeated sterilization[^]
- Translucent natural color for visual contact with the flow
- Able to resist extreme temperature variation: -99°F to 350°F
- Odorless, tasteless, and inert
- Excellent weatherability properties — resists U.V., ozone, gases, moisture, and extreme temperatures
- Offers far higher pressure capabilities than similarly-sized unreinforced silicone tubing
- Listed by the National Sanitation Foundation (NSF-51) for food equipment materials
- Free of BPA, latex and phthalates; REACH and RoHS compliant



PART NO.	ID (IN.)	OD (IN.)	WALL (IN.)	STANDARD LENGTHS (FT.)	WORKING PSI AT 70°F	LBS. PER 100 FT.
290 0072	1/8	.365	.120	100	233	5
290 0149	3/16	.447	.130	100	216	7
290 0226	1/4	.520	.135	100	208	9
290 0303	5/16	.592	.140	100	183	11
290 0380	3/8	.655	.140	100	166	13
290 0457	1/2	.800	.150	50, 100	141	17
290 0534	5/8	.965	.170	50	116	23
290 0611	3/4	1.100	.175	50	91	28
290 0765	1	1.380	.190	50	75	36

Cut coils are available; charges apply — call for details.
Add length suffix to part number when ordering. Example: 100 ft. of 1/8" I.D. x .365" O.D. hose is part number 290 0072-100.

Working pressures are calculated from burst testing using a 3:1 safety factor. Application testing is recommended.

BOLD indicates the critical dimension for fittings application.



Custom Services

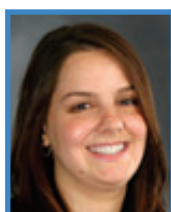
- **Cut** ■ **Color**
- **Size** ■ **Hardness** ■ **Overbraided** ■ **And More**

Call for more information: **800-506-3924** or **215-526-2300**

More NewAge Industries' Owners

Did you know ... ?

Our Sales and Warehouse teams **operate until 6 pm**, eastern time, Monday through Thursday (Fridays till 5 p.m.).



Kristen Blum
Marketing & Acct.
Assistant/Owner
9 years



Sokea Vann
Plastic Manu-
facturing/Owner
11 years



Kley Sorm
Silicone Molding/
Owner
1 year

ESOP Employee Owned
for Your Benefit

Notes

The construction of SILBRADE enables silicone tubing to handle increased pressure applications. SILBRADE offers outstanding resistance to temperature extremes and is made from raw materials that meet FDA requirements.

The flexible design and construction of SILBRADE also allows excellent bend radii and permits installation in restricted spaces without impeding flow.

SILBRADE, a peroxide-cured product, contains no sulphur or other acid-producing chemicals thereby eliminating the possibility of staining, corroding, or deteriorating other materials it contacts. It is also resistant to ozone and U.V. over long time periods.

Care is recommended in the selection of fittings and clamps, as sharp barbed fittings or unlined metal clamps could tear into the hose wall and possibly cause a failure, especially at elevated pressures.

[^]SILBRADE may be low pressure steam sterilized in-line or autoclaved at up to 250°F in a normal autoclaving cycle. However, if exposed to repeated steam sterilization or long-term high temperature or pressure, silicone will eventually relax and become gummy. It should then be replaced.

SILBRADE is not recommended for implantable or in-body uses or for continuous steam applications.

Physical Properties**

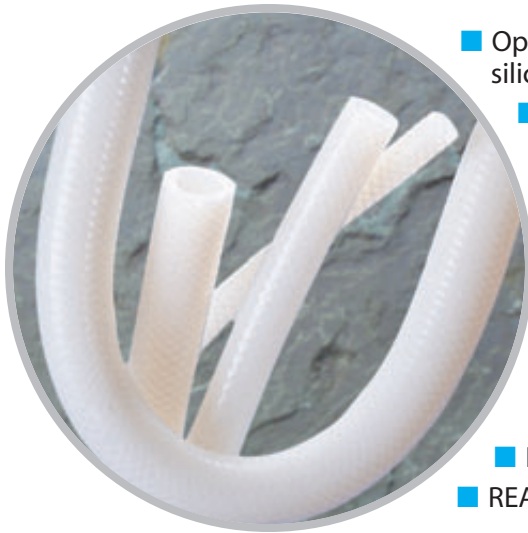
Hardness, Shore A ±5 – Liner	70
Hardness, Shore A ±5 – Cover	60
Tensile Strength, psi	1460
Elongation at Break, %	320
Tear Resistance, Die B, ppi	100
Modulus at 100%, psi	415
Brittle Temperature, °F	-99
Maximum Operating Temperature, °F	350

**Values listed are typical for the material used in manufacture except where noted, apply to the hose liner except where noted, and are meant only as a guide to aid in design. Field testing should be performed to find the actual values for your application.

Recommended Fittings & Clamps

- Thermobarb® barbed fittings
- Oetiker® ear type clamps
- Kwik Clamp™ nylon double bond hose clamps
- Worm gear clamps

Medical Grade Braid Reinforced Silicone Hose



- Open mesh polyester braiding incorporated within the walls of silicone tubing
- Finished product meets USP Class VI requirements
- Translucent natural color for visual contact with the flow
- Able to resist extreme temperature variation: -99°F to 350°F
- Reusable — will withstand repeated sterilization[^]
- Odorless, tasteless, and inert
- Raw materials meet FDA requirements per FDA 21 CFR 177.2600 for use with food contact surfaces
- Manufactured under good manufacturing procedures in a controlled environment
- Free of BPA, latex and phthalates
- REACH and RoHS compliant



Notes

SILBRADE MEDICAL's construction consists of a liner of silicone elastomer, an open polyester braid reinforcing layer, and a cover layer of silicone elastomer. Good manufacturing procedures, including lot traceability, are applicable to all Class VI ingredients. SILBRADE MEDICAL is a peroxide-cured product.

The hose's smooth bore, coupled with its resistance to allow material to adhere to the tube wall, facilitates easy cleaning and system purging.

[^]SILBRADE MEDICAL may be low pressure sterilized in-line or autoclaved up to 250°F in a normal autoclaving cycle. If exposed to repeated steam sterilization or long-term high temperature or pressure, silicone will eventually relax and become gummy. It should then be replaced.

Care is recommended in the selection and application of fittings and clamps, as sharp barbed fittings or unlined clamps could tear into the hose wall and possibly cause a failure, especially at elevated pressures.

Peroxide-cured SILBRADE MEDICAL hose is supplied in individual, non-sterile, heat-sealed polybags and should be sterilized prior to use.

Platinum-cured, braid-reinforced silicone hose is available; see next page.

SILBRADE MEDICAL is not recommended for implantable or in-body uses or for continuous steam applications.

Physical Properties**

Hardness, Shore A ±5 – Liner	70
Hardness, Shore A ±5 – Cover	60
Tensile Strength, psi	1460
Elongation at Break, %	320
Tear Resistance, Die B, ppi	100
Modulus at 100%, psi	415
Brittle Temperature, °F	-99
Maximum Operating Temperature, °F	350

**Values listed are typical for the material used in manufacture except where noted, apply to the hose liner except where noted, and are meant only as a guide to aid in design. Field testing should be performed to find the actual values for your application.

PART NO.	ID (IN.)	OD (IN.)	WALL (IN.)	WORKING PSI AT 70°F	LBS. PER 100 FT.
291 0334	1/4	.520	.135	208	9
291 0411	5/16	.592	.140	183	11
291 0488	3/8	.655	.140	166	13
291 0565	1/2	.800	.150	141	17
291 0719	3/4	1.100	.175	91	28
291 0873	1	1.380	.190	75	36

Sold by standard coil length only (25 ft.). Add length suffix to part number when ordering. Example: 25 ft. of 1/4" I.D. hose is part number 291 0334-25.

Working pressures are calculated from burst testing using a 3:1 safety factor. Application testing is recommended.

BOLD indicates the critical dimension for fittings application.



Recommended Fittings & Clamps

- Thermobarb® barbed fittings
- Oetiker® ear type clamps
- Kwik Clamp™ nylon double bond hose clamps
- Worm gear clamps

Custom Services

- **Cut** ■ **Overbraid**
- **Size** ■ **And More**

Call for more information
800-506-3924

More NewAge Industries' Owners

Did you know ... ?

Our number of Technical Sales Representatives is **twice the industry average.**



Chris Mercado
Warehouse/Owner
5 years



Lauren Schmidt
Sr. Procurement Specialist/ Owner
8 years

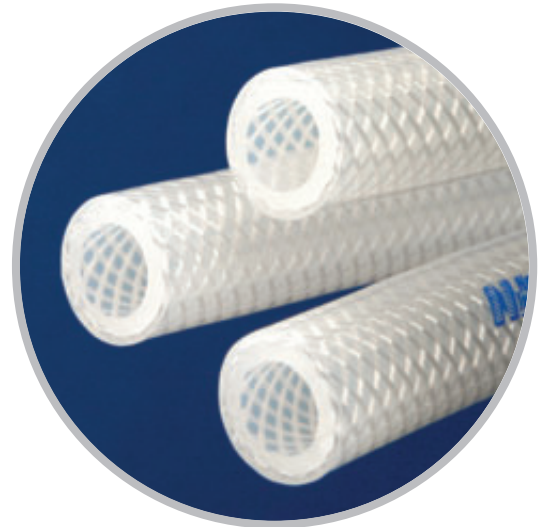


Jeff Johnson
Director of Software Solutions/Owner
27 years

ESOP Employee Owned
for Your Benefit

Platinum Cured Braid Reinforced Silicone Hose

- Platinum cured for the highest degree of purity
- Raw materials meet FDA requirements per FDA 21 CFR 177.2600 for use with food contact surfaces
- Listed by the National Sanitation Foundation (NSF-51) for food equipment materials
- Odorless, tasteless, and inert
- Open mesh polyester braiding incorporated within walls of silicone offers increased pressure capabilities
- Able to resist extreme temperature variation: -100°F to 400°F
- Translucent natural color for visual contact with the flow
- Kink resistant yet highly flexible
- Reusable — will withstand repeated sterilization[^]
- Excellent weatherability properties — resists U.V., ozone, gases, moisture, and extreme temperatures
- Manufactured in a controlled environment
- Free of BPA, latex and phthalates
- REACH and RoHS compliant



PART NO.	ID (IN.)	OD (IN.)	WORKING PSI AT 70°F	LBS. PER 100 FT.
292 1023	1/4	1/2	140	7.7
292 1044	3/8	5/8	140	10.2
292 1065	1/2	7/8	105	21.1
292 1086	3/4	1-1/8	90	28.7
292 1107	1	1.405	60	40.1

Sold by standard length (50 ft). Add length suffix to part number when ordering. Example: 50 ft. of 1/4" I.D. Silbrade Platinum is part number 292 1023-50.

Working pressures are calculated from burst testing using a 3:1 safety factor. Application testing is recommended.

BOLD indicates the critical dimension for fittings application.



Recommended Fittings & Clamps

- Thermobarb® barbed fittings
- Oetiker® ear type clamps
- Kwik Clamp™ nylon double bond hose clamps
- Worm gear clamps

Custom Services

- Cut
- Overbraided
- Size
- And More

Call for more information
800-506-3924

Notes

The construction of SILBRADE PLATINUM involves a liner of silicone elastomer, an open polyester braid reinforcing layer, and a covering of silicone elastomer. The braid reinforcement allows for increased pressure usage over unreinforced silicone tubing. SILBRADE PLATINUM contains no plasticizers.

SILBRADE PLATINUM's surface properties resist encrustation and will not support bacteria growth. It is nonreactive to body tissues and fluids.

Care is recommended in the selection and application of fittings and clamps as sharp barbed fittings or unlined metal clamps could tear into the hose wall, possibly leading to hose failure.

[^]SILBRADE PLATINUM should not be used for steam transfer. Steam-for-sterilization is the only recommended exposure to steam. If exposed to repeated steam sterilization or long term high temperature or pressure, silicone will eventually become gummy. It should then be replaced.

SILBRADE PLATINUM is supplied in individual, heat-sealed polybags.

SILBRADE PLATINUM is not recommended for implantable or in-body uses or for continuous steam applications.

Physical Properties**

Hardness, Shore A ±5 – Liner	70
Hardness, Shore A ±5 – Cover	60
Tensile Strength, psi	1320
Elongation at Break, %	630
Tear Resistance, Die B, ppi	320
Modulus at 100%, psi	500
Brittle Temperature, °F	-100
Maximum Operating Temperature, °F	400

**Values listed are typical for the material used in manufacture except where noted, apply to the hose liner except where noted, and are meant only as a guide to aid in design. Field testing should be performed to find the actual values for your application.

More NewAge Industries' Owners

Did you know ... ?

Our overall **product quality** has averaged **99.8% defect free** over the last ten years.



Matt Bauer
Production Mgr./
Owner
12 years



Jerry Prieto
IT Technical
Assistant/Owner
6 years



Thanh Ma
Silicone Molding/
Owner
5 years

ESOP Employee Owned
For Your Benefit

More NewAge Industries Products

Tube & Hose

PVC
Polyurethane
Silicone
Fluoropolymer
Nylon
Polyethylene
Polypropylene
TPR
Viton™
Latex
Hytrel®

Custom Services



Fittings & Clamps for Silicone

Thermobarb® Plastic - Precision molded barbed fittings in nylon-6, high density polyethylene, PVDF, polypropylene, reinforced nylon, or reinforced polypropylene. Sizes for 1/8" to 1" I.D. tubing in 15 styles.

Thermobarb® Brass - Durable brass barbed fittings. Sizes for 1/8" to 1" I.D. tubing in 10 styles.

Cam Operated Couplings - Molded from glass-fiber reinforced nylon or glass-fiber reinforced polypropylene. Sizes from 1/2" to 4" in 8 styles.

Oetiker® Ear Type Clamps - Stainless steel or zinc-plated carbon steel clamps with a unique breathable design. 35 sizes from 5/32" to 1-9/16" in 3 styles.

Kwik Clamp™ - Nylon double-bond hose clamps. 31 sizes from 1/4" to 4-1/4" nominal O.D.

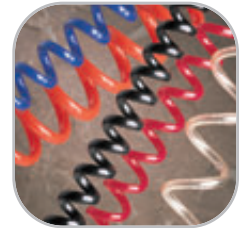
Worm Gear Clamps - Stainless steel worm screw clamps. 28 sizes from 3/8" to 6" in 6 styles.

Tube & Hose Cutting Tools



High Purity Tubing & Hose

Sanitary tubing, hose, fittings, assemblies, and molded components from our AdvantaPure division meet the needs of the pharmaceutical, biotech, food and beverage, dairy, cosmetics and fragrances, and chemical industries, as well as other sanitary applications. AdvantaPure products are available through a network of select distributors. www.advantapure.com



Silbrade, Silicon, Kwik Clamp, Thermobarb, Hot Bond, NewAge, "Fluid Transfer Specialists," The "N" Logo, and AdvantaPure are trademarks of NewAge® Industries, Inc. • Oetiker reg. TM Oetiker, Inc. • Hytrel reg. TM E. I. du Pont de Nemours and Company • Viton trademark The Chemours Company
WARRANTY: NewAge Industries' products are warranted to be free from defects in material and workmanship. Any product found to carry such defects will be replaced without charge. This warranty is limited only to the replacement of NewAge Industries' products, item for item, which after examination by NewAge Industries are deemed defective. NewAge Industries specifically disclaims any other liability. The data supplied is provided as a helpful guideline and is believed to be reliable; however, nothing stated shall constitute a guarantee, recommendation, or warranty for any application.
NOTICE: NewAge Industries, Inc. has been a privately owned corporation since 1954. Neither the corporation nor its principals are affiliated, in any way, with any other group or entity either representing themselves as or being referred to by the term NewAge.
© NewAge Industries, Inc. 2017 Specifications are subject to change without notice.

DISTRIBUTOR PARTNER



145 James Way
Southampton, PA 18966
www.newageindustries.com

800-50-NEWAGE
(800-506-3924)
215-526-2300

Fax: 800-837-1856
215-526-2190

info@newageindustries.com

ESOP
Employee Owned
for Your Benefit